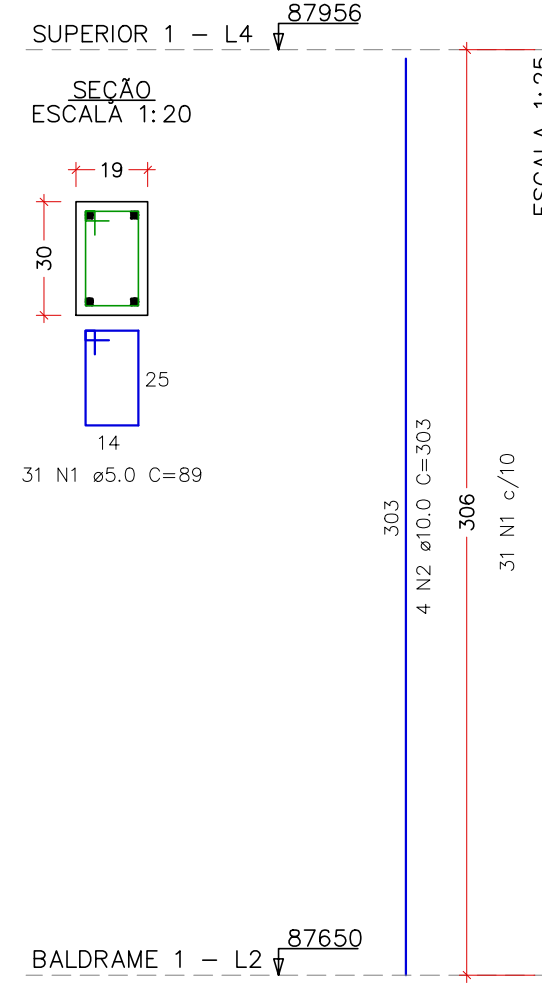
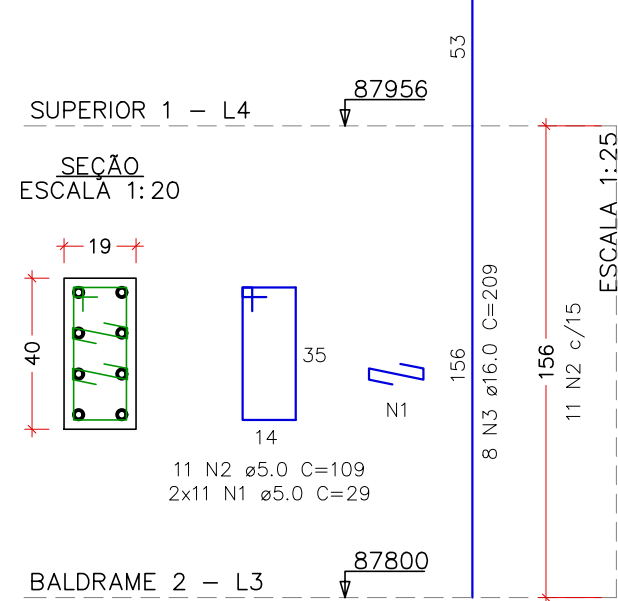


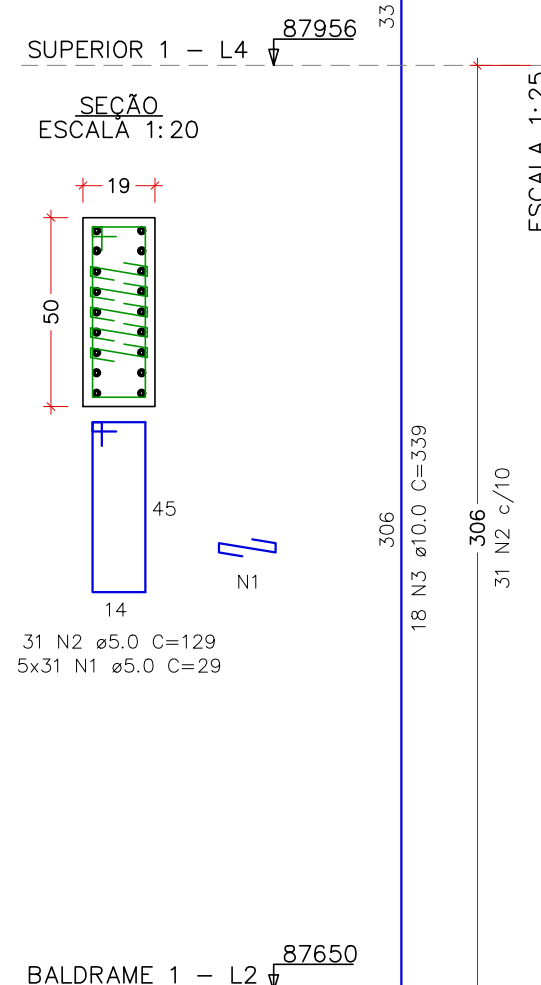
P51=P56=P58



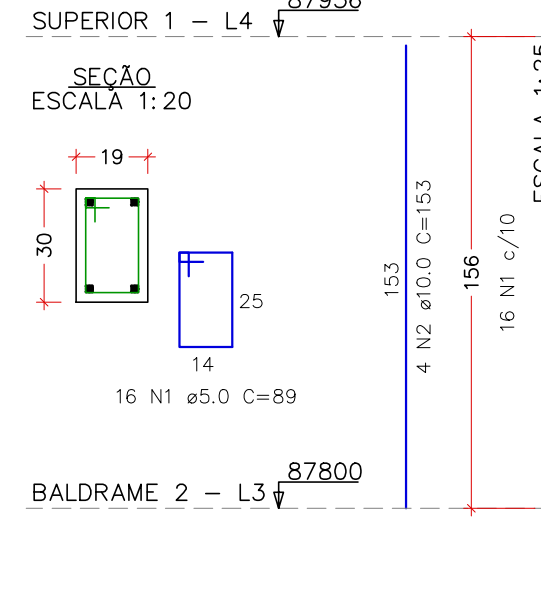
P52



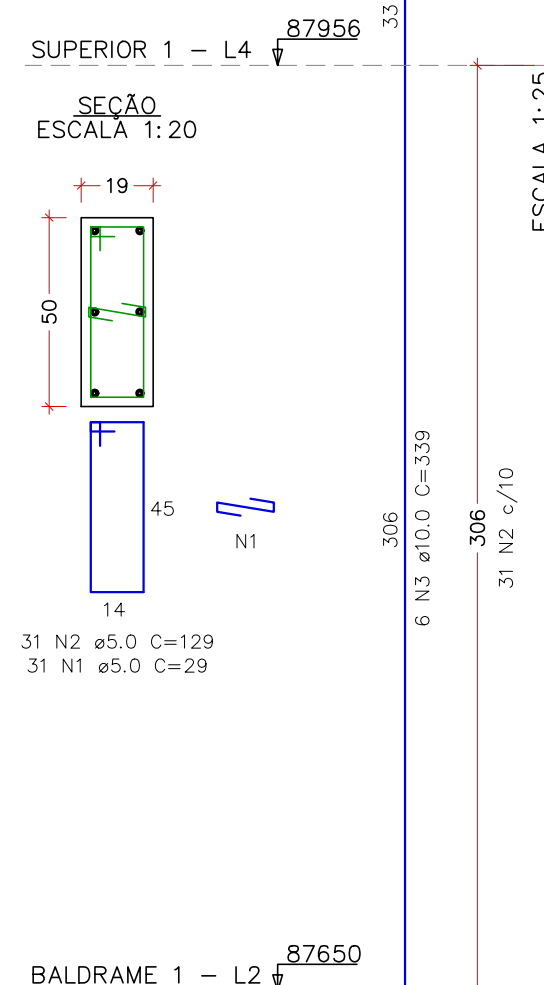
P53=P59



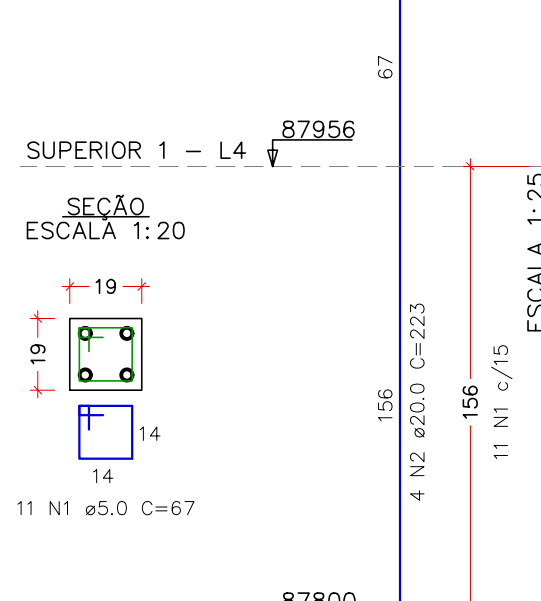
P54



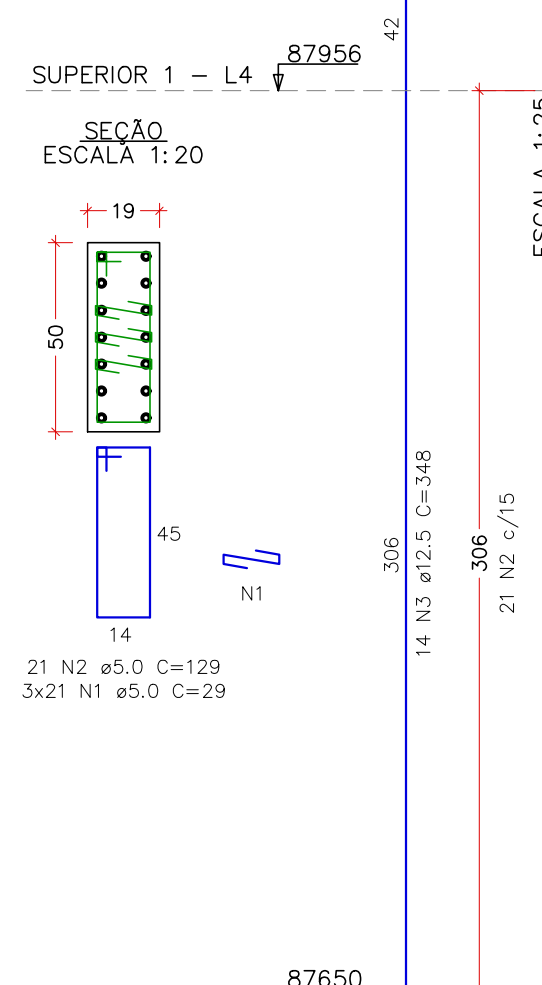
P55=P57



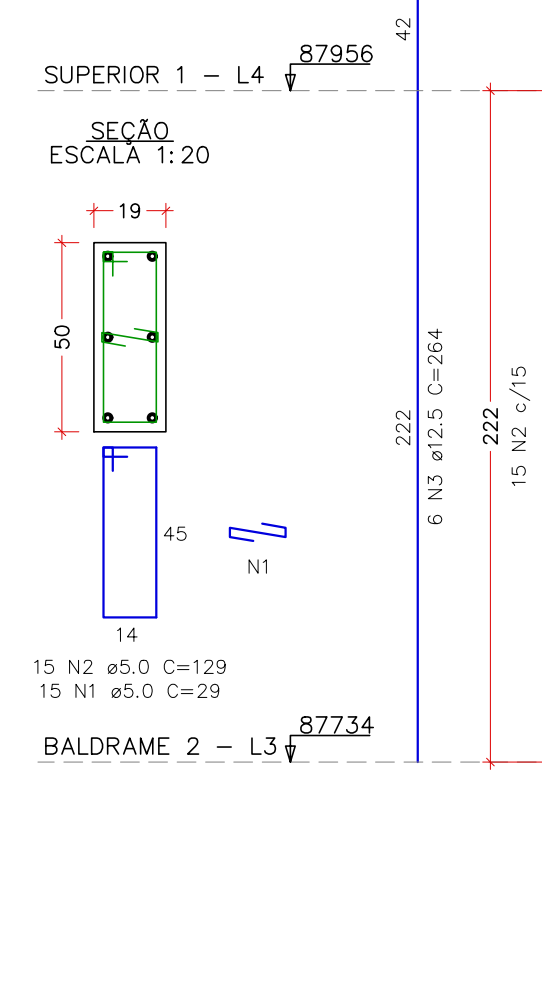
P61



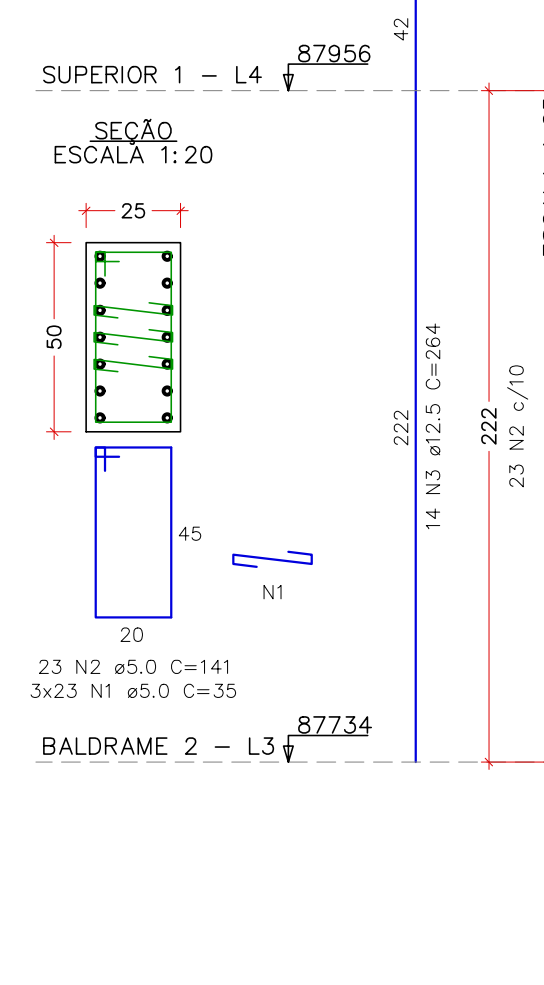
P62



P67=P68



P69



RELAÇÃO DO AÇO – PAV. SUPERIOR 1						
ELEMENTO	AÇO	N	DIAM (mm)	QUANT (C/UNIT)	C.TOTAL (cm)	C.TOTAL (cm)
3xP51	CA50	1	5.0	93	89	8277
P52	CA50	2	10.0	12	303	3636
	CA60	1	5.0	22	29	638
	CA60	2	5.0	11	109	1199
2xP53	CA50	1	5.0	310	29	8990
	CA60	3	16.0	8	209	1872
	CA60	1	5.0	16	89	7998
P54	CA50	3	10.0	36	339	12254
	CA60	1	5.0	16	89	1454
	CA50	2	10.0	4	153	612
2xP55	CA50	1	5.0	62	129	7998
	CA60	2	5.0	62	129	7998
	CA50	3	10.0	12	339	4068
P61	CA60	1	5.0	11	67	737
	CA50	4	20.0	63	223	892
	CA60	2	5.0	21	129	1827
P62	CA60	1	5.0	21	129	2709
	CA50	3	12.5	14	348	14872
	CA60	2	5.0	44	29	1276
P64	CA60	1	5.0	11	129	1454
	CA50	3	12.5	16	198	3168
	CA60	2	5.0	7	29	263
P65	CA50	3	10.0	7	129	903
	CA60	1	5.0	35	29	1015
	CA50	2	5.0	7	129	903
2xP67	CA50	3	10.0	22	99	2178
	CA60	2	5.0	30	129	3870
	CA60	1	5.0	12	264	1668
P69	CA60	1	5.0	69	35	2415
	CA50	3	12.5	14	348	14872
	CA50	3	12.5	14	264	3696

RESUMO DO AÇO			
AÇO	DIAM (mm)	C.TOTAL	PESO + 10%
CA50	10.0	232.9	158
CA60	12.5	149	29
CA60	16.0	16.7	29
CA60	20.0	8.9	101.2
PESO TOTAL (kg)			
CA50	369.1		
CA60	101.2		

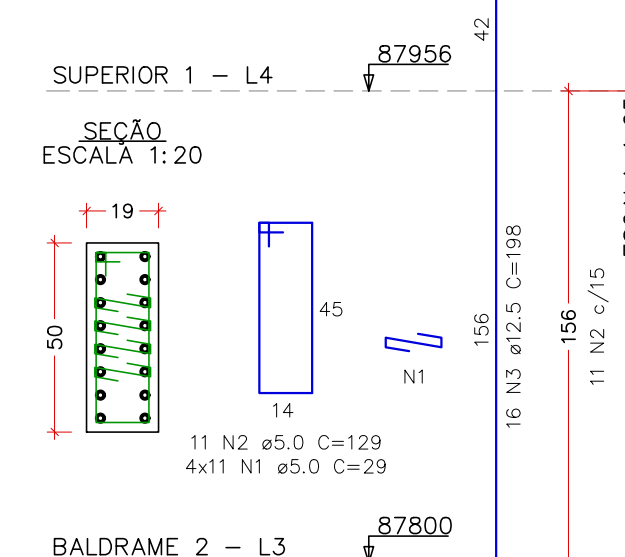
VOLUME DE CONCRETO (C=30) = 3.21 m³
ÁREA DE FORMA = 48.10 m²

RELAÇÃO DO AÇO – PAV. SUPERIOR 2						
ELEMENTO	AÇO	N	DIAM (mm)	QUANT (C/UNIT)	C.TOTAL (cm)	C.TOTAL (cm)
7xP1	CA60	1	5.0	105	89	9345
P2	CA50	2	10.0	28	147	4116
	CA60	1	5.0	21	29	609
	CA60	2	5.0	21	129	2709
P3	CA50	3	12.5	30	348	2098
	CA60	1	5.0	21	89	1869
	CA50	1	5.0	21	89	1869
4xP4	CA60	1	5.0	124	29	3596
	CA50	3	10.0	24	339	15996
	CA50	3	10.0	24	339	8156
2xP5	CA60	1	5.0	30	79	2370
	CA50	2	10.0	8	147	1176
	CA60	2	5.0	210	29	6090
2xP6	CA60	1	5.0	42	129	5418
	CA50	3	16.0	36	359	12924
	CA60	2	5.0	84	29	2436
2xP7	CA50	3	16.0	36	359	4578
	CA60	2	5.0	42	109	4578
	CA50	3	10.0	1135	348	1212
P9	CA60	1	5.0	31	89	2759
	CA60	2	5.0	60	29	1740
	CA50	2	5.0	20	129	2980
2xP10	CA60	1	5.0	60	29	1740
	CA50	3	12.5	28	192	5376
	CA60	1	5.0	31	29	899
P19	CA60	2	5.0	31	89	2759
	CA50	3	10.0	14	303	4424
	CA60	1	5.0	62	29	1798
P21	CA60	1	5.0	31	109	3379
	CA50	3	10.0	8	339	2712
	CA60	1	5.0	10	67	670
P24	CA60	1	5.0	10	67	670
	CA50	2	12.5	4	192	768
	CA60	1	5.0	10	29	290
P25	CA60	1	5.0	10	129	1500
	CA50	3	12.5	6	192	1152
	CA60	1	5.0	10	29	1827
P28	CA60	1	5.0	21	109	2289
	CA50	3	12.5	18	348	6264
	CA60	2	5.0	20	109	980
2xP29	CA60	1	5.0	20	29	580
	CA50	3	12.5	12	192	2304
	CA60	1	5.0	60	29	1740
2xP31	CA60	2	5.0	20	129	2980
	CA50	3	16.0	28	203	5694
	CA60	1	5.0	50	29	1450
P32	CA60	1	5.0	50	29	1450
	CA50	3	12.5	18	192	3456
	CA60	2	5.0	20	28	560
P33	CA60	2	5.0	10	129	1500
	CA50	3	20.0	10	217	2170

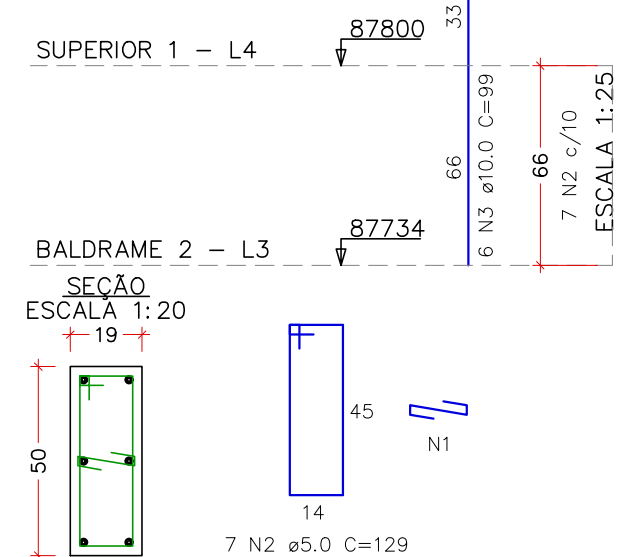
RESUMO DO AÇO			
AÇO	DIAM (mm)	C.TOTAL	PESO + 10%
CA50	10.0	215.9	146.4
CA60	12.5	322.4	344.9
CA60	16.0	186.1	323.1
CA60	20.0	33.8	91.7
CA60	5.0	889.7	150.8
PESO TOTAL (kg)			
CA50	806.1		
CA60	150.8		

VOLUME DE CONCRETO (C=30) = 5.49 m³
ÁREA DE FORMA = 85.10 m²

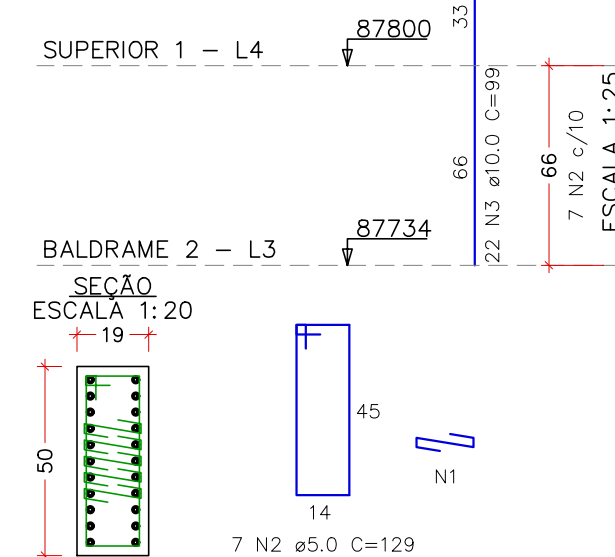
P64



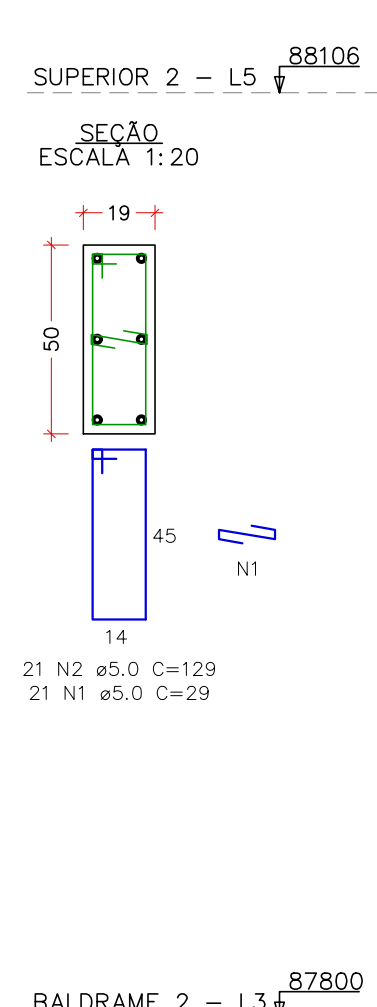
P65



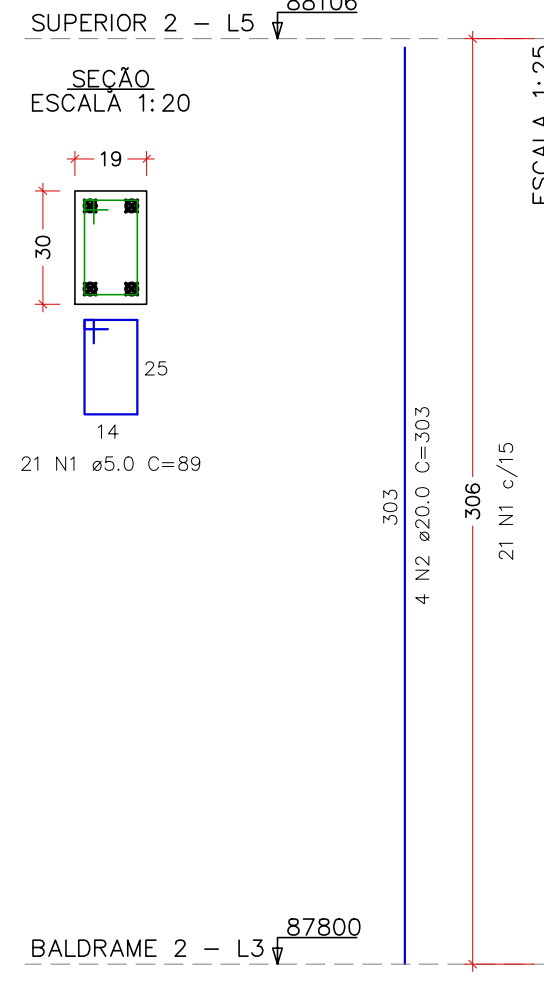
P66



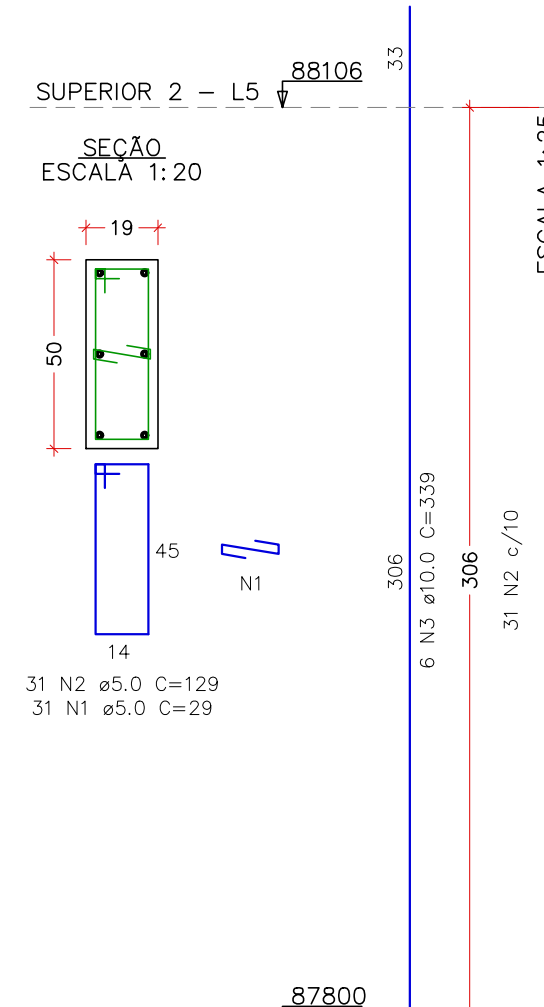
P2



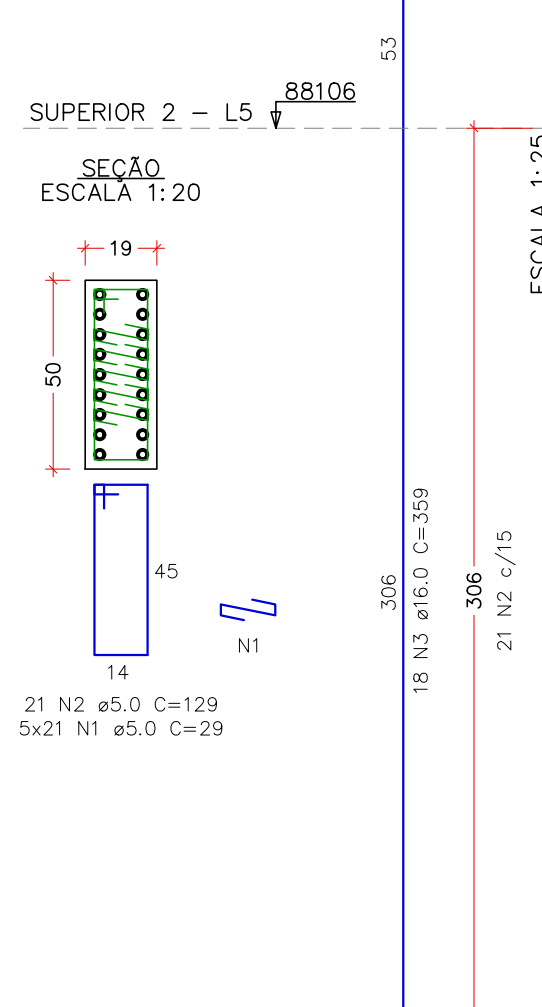
P3



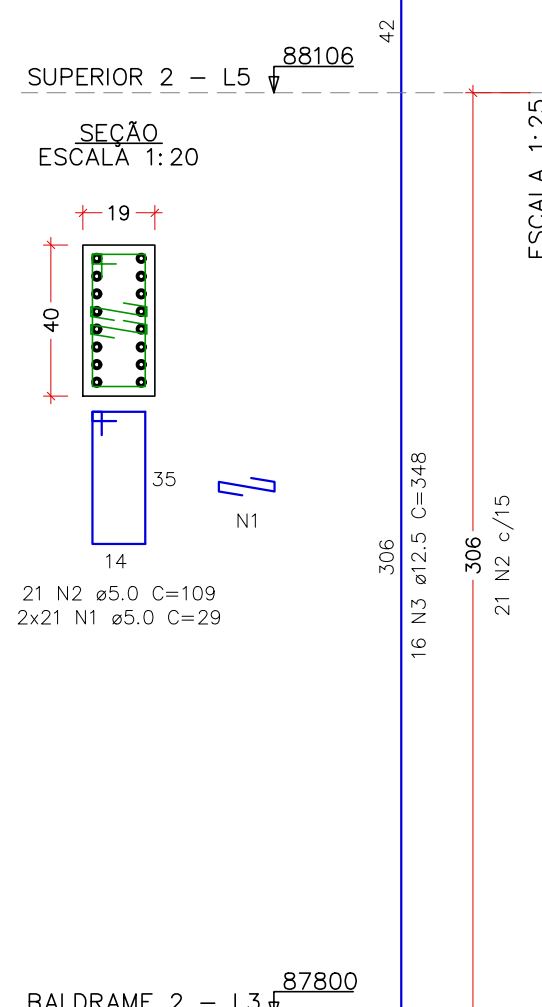
P4=P18=P20=P23



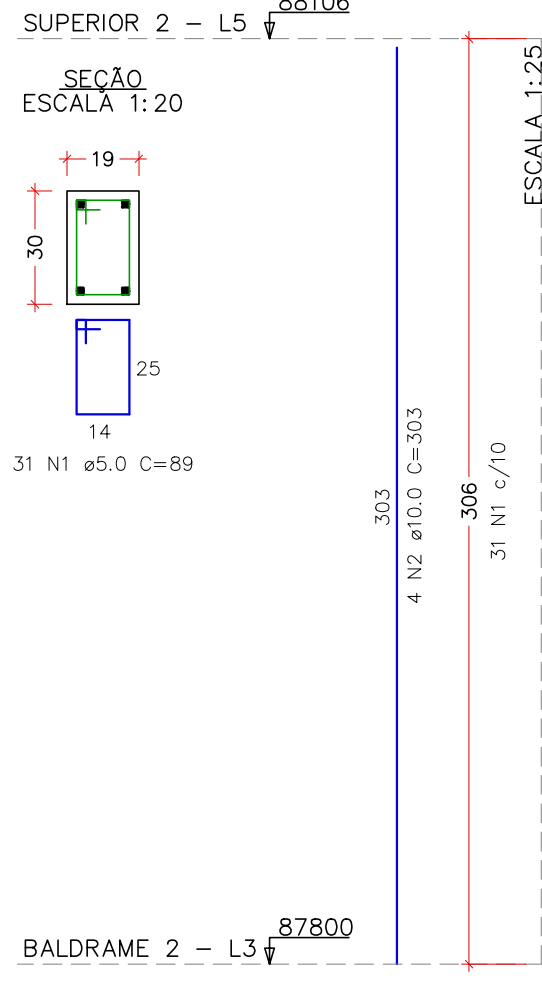
P6=P8



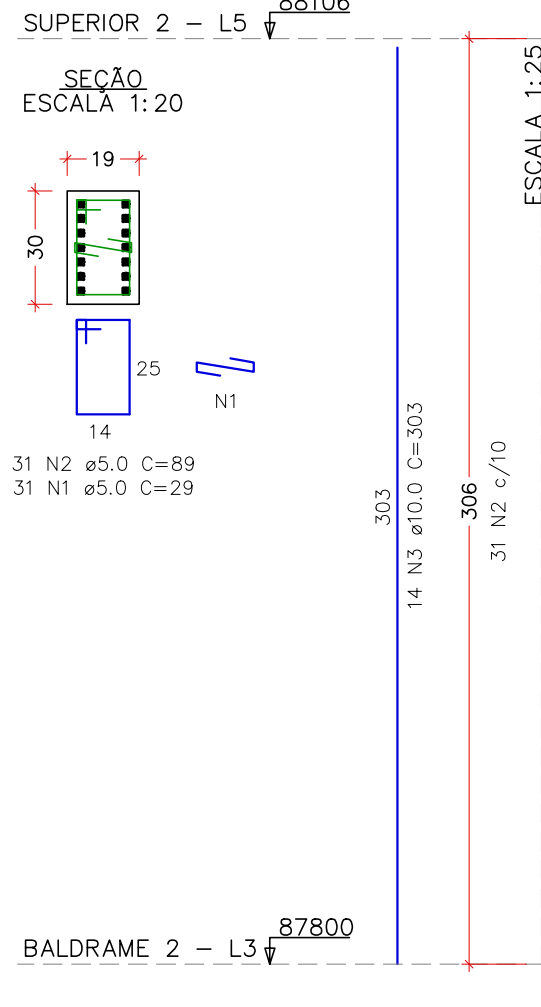
P7=P22



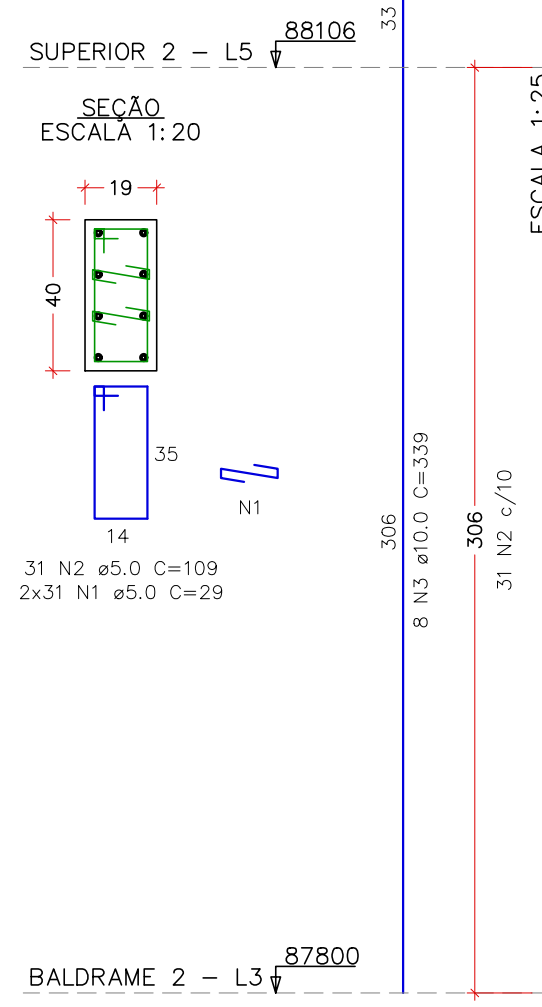
P9



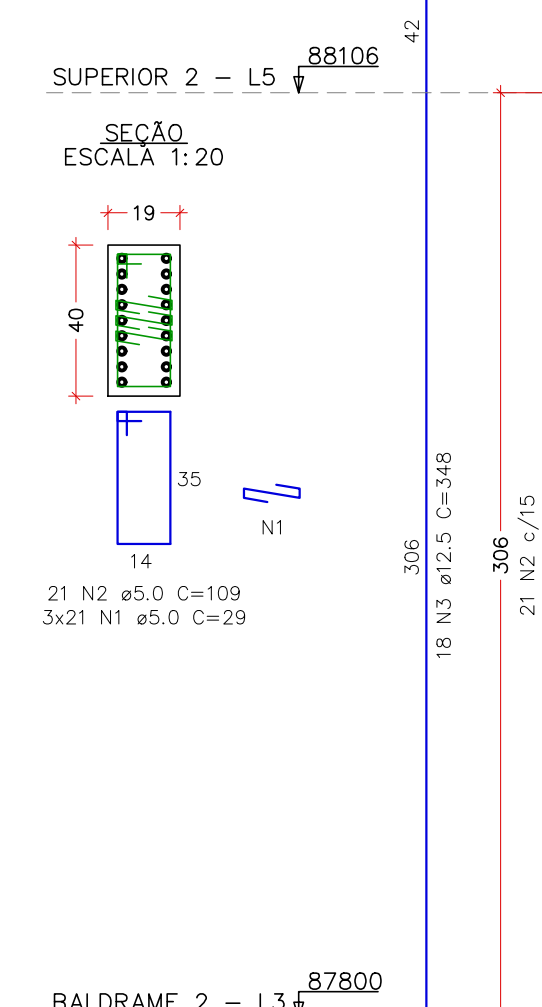
P19



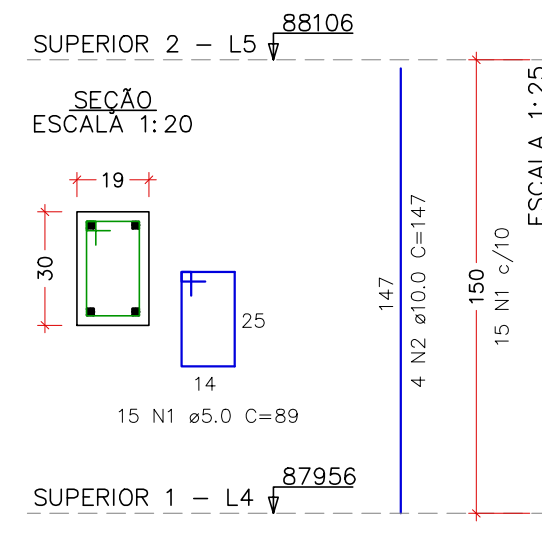
P21



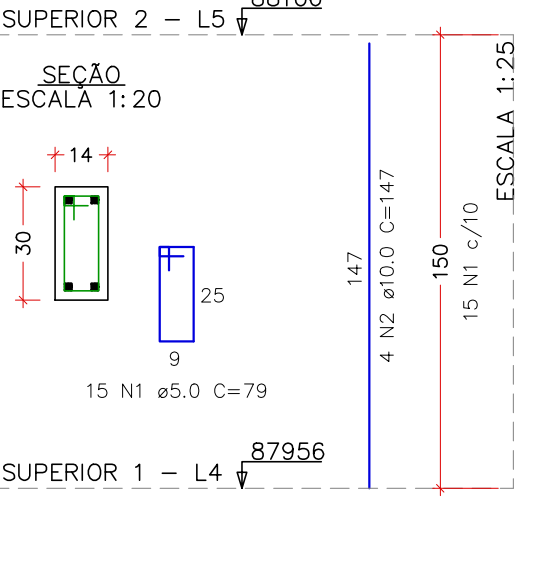
P28



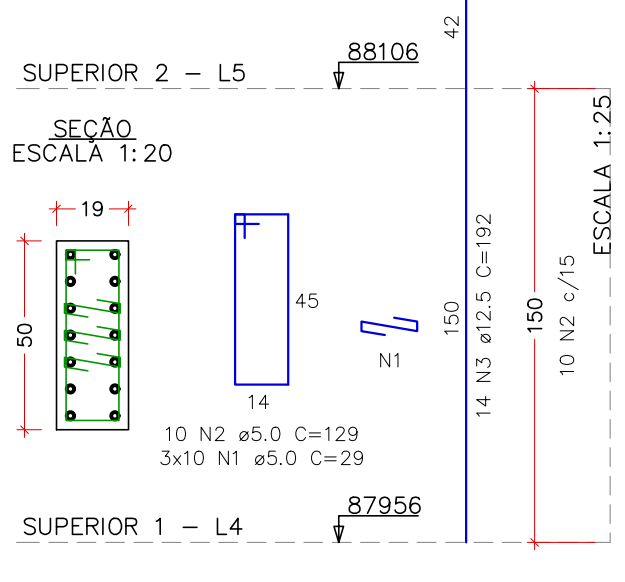
P1=P11=P14=P17=P30=
=P37=P40



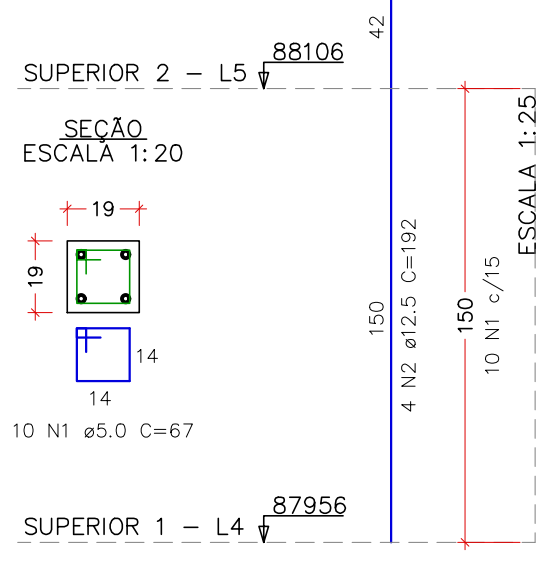
P5=P13



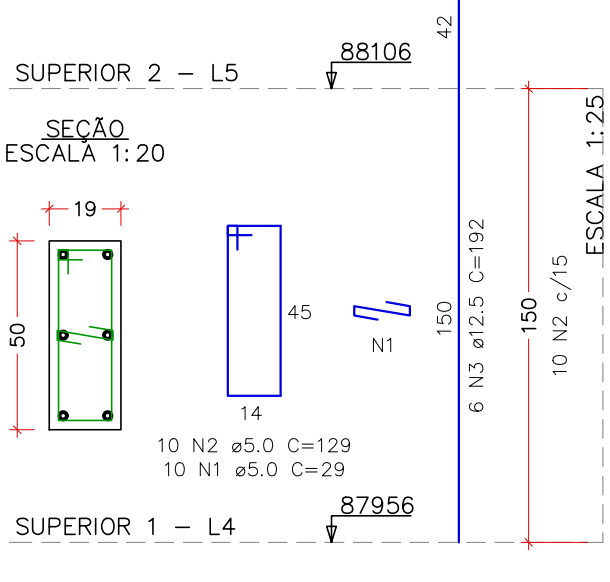
P10=P62



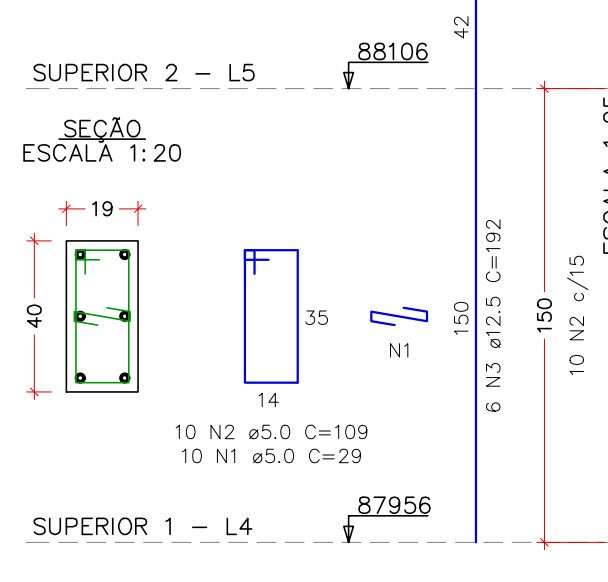
P24



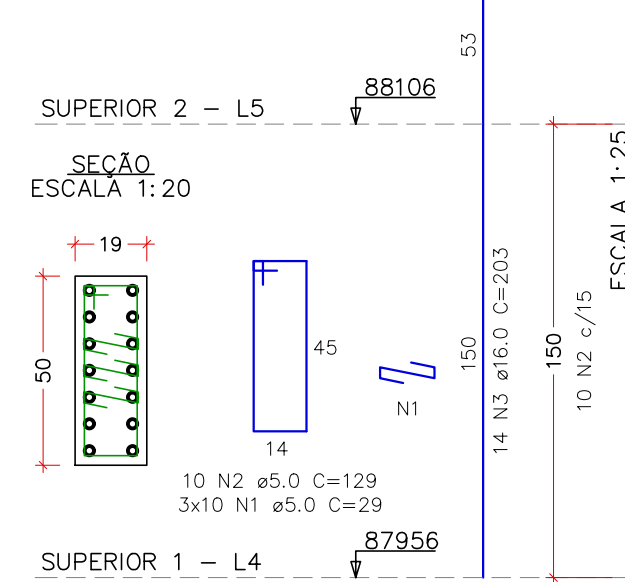
P25



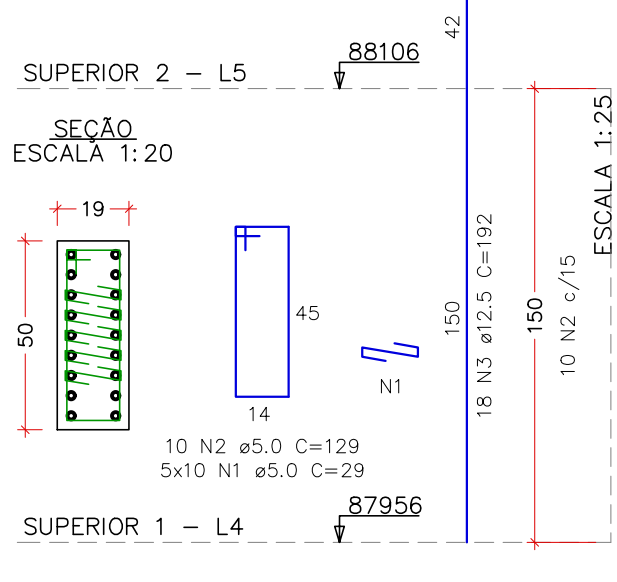
P29=P43



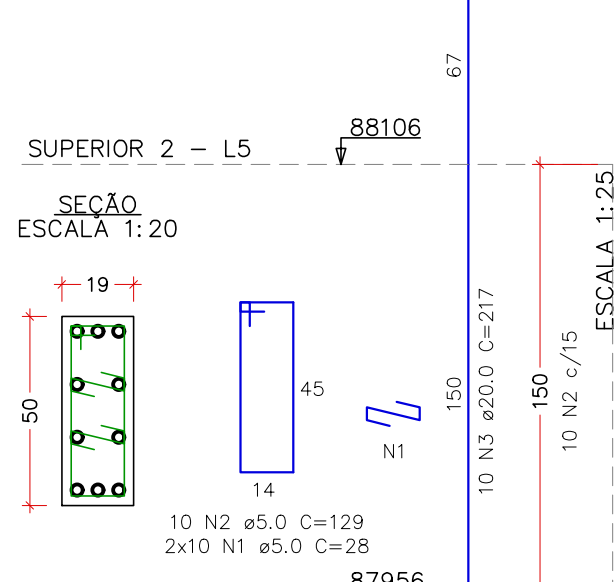
P31=P47




P32



P33



 Francisco, 341, Bairro Varginha 301-052 - Itajubá / MG (35) 2143 - 9087 dacengenharia.com.br	COORDENAÇÃO:	
	ALOISIO CAETANO FERREIRA	CREA: MG-97.13Z/
	RESPONSÁVEL TÉCNICO E AUTOR	
	RAFAEL BARBOSA CARREIRA	CAU: 00A155411-